



**SAWAED ARAB COMPANY**

FOR CONTRACTING Ltd



**profile**

**SAWAED**  
**arab**

[www.sawaedarab.com](http://www.sawaedarab.com)



**SAWAED ARAB COMPANY**  
FOR CONTRACTING Ltd

- 1 WELCOME WORD**
- 2 INTRODUCTION**
- 3 SERVICES**
- 4 SAFETY**
- 5 PROJECTS**





**SAWAED ARAB COMPANY**  
FOR CONTRACTING Ltd

*WELCOME*  
*Word*

## CEO's Message

At Sawaed Arab, we pride ourselves on providing high-quality contracting services based on innovation, commitment, and excellence in execution. We work with a specialized team and trusted partners to achieve our clients' aspirations according to the highest standards, while ensuring adherence to schedules, safety, and sustainability.

We always strive to build long-term relationships based on trust and transparency, and to contribute to the development of projects that leave a positive and lasting impact.



**SAWAED ARAB COMPANY**  
FOR CONTRACTING Ltd

## OUR VISION

- we aspire become the Regional Leader for large scale in (the rock stabilization, rock cutting, tunneling, bridges, roads and infra structures) project of all methods.
- we aspire for be compatitve company in (the rock stabilization, rock cutting, tunneling, bridges, roads and infra structures)
- To become an essentail and active part of all projects that support **Royal Vision 2030**



**SAWAED ARAB COMPANY**  
FOR CONTRACTING Ltd

## OUR BELIEF

We believe that success comes from co-operation and people's strengths. We put all our company resources experiences knowledge, synergies and innovative spirit of our people at the service of our customers.

By cooperating with our customers, suppliers, employees and communities, we focus our expertise and resources on developing the most promising markets by:

- Providing competitive, valued, superior quality products to our customers
- Creating new market opportunities for our suppliers
- Sustaining the professional development of our employees



**SAWAED ARAB COMPANY**  
FOR CONTRACTING Ltd

## OUR CORE VALUES

- **QUALITY**
- **EDUCATION**
- **INTEGRITY**
- **EXPERIENCE**
- **INNOVATION**
- **ACCOUNTABILITY**
- **PROFITABILITY**
- **COLLABORATION**



**SAWAED ARAB COMPANY**  
FOR CONTRACTING Ltd

## ROADS BRIDGE TUNNELS

### Construction & Repair.

The level of progress of countries and their presence is measured through the road network that this country possesses because this network is a fundamental pillar and a strong supporter for prosperity in all fields and we are an effective and strong contributor with many companies in this field and we have a trained technical staff at the highest level and we have sufficient experience through working with Big companies and work on several projects





**SAWAED ARAB COMPANY**  
FOR CONTRACTING Ltd

## ROCK CUTTING, BREAKING&BLASTING

- Mechanical Cutting Rocks in weak & weathering rocks
- Rock cutting by explosion in (medium - hard) rock and is often in open areas and far from buildings and cities
- Cutting rock by chemical matter, named is careful cutting rocks that in city & nearest buildings
- Drilling and blasting currently utilizes many different varieties of explosives with different compositions and performance properties. Higher velocity explosives are used for relatively hard rock in order to shatter and break the rock, while low velocity explosives are used in soft rocks to generate more gas pressure and a greater heaving effect. For instance, an early 20th-century blasting manual compared the effects of black powder to that of a wedge, and dynamite to that of a hammer.



**SAWAED ARAB COMPANY**  
FOR CONTRACTING Ltd

## CUTTING ROCKS BLASTIC

- A drill jumbo during the construction of Citybanan under Stockholm, used for drilling holes for explosives as the name suggests, drilling and blasting works as follows a number of holes are drilled into the rock, which are then filled with explosives.
- Detonating the explosive causes the rock to collapse.
- Rubble is removed and the new tunnel surface is reinforced.
- Repeating these steps until desired excavation is complete.
- The positions and depths of the holes (and the amount of explosive each hole receives) are determined by a carefully constructed pattern, which, together with the correct timing of the individual explosions, will guarantee that the tunnel will have an approximately circular cross-section.
- During operation, blasting mats may be used to contain the blast, suppress dust and noise, for fly rock prevention and sometimes to direct the blast.



**SAWAED ARAB COMPANY**  
FOR CONTRACTING Ltd

## ROCKFALL BARRIERS

- high-tensile steel wire
- (tensile strength of at least 1770 N/mm<sup>2</sup>)
- protection against impact energies up to 9000 kJ
- This type of protection used for protect buildings, roads, safety on high levels and satabilization.
- Protect
- Safety wire
- secure wire
- protection wiremesh
- Barbed wire





**SAWAED ARAB COMPANY**  
FOR CONTRACTING Ltd

## SOIL STABILIZATION

Is a cover and protection for the faces of rock pieces and natural mountain slopes, so that the facades of rock are covered with galvanized wire mesh with a thickness ranging from (2.8–3.76) mm, in forms that vary according to the opening of the metal wire and the cutting method, such as (8 × 8) or (8 × 10).

The wire mesh or metal lattices are then placed on the entire surface of the mountain facades and fixed with iron railings, leaving a distance between the nets and the mountain. A thickness of 5 cm is installed to facilitate the application of high-quality dry or wet concrete, which is about 10 cm to 12 cm thick.

The general shape is transformed into homogeneous facades that provide safety, prevent rock and soil fall, and resist erosion for decades.

Use shotcrete in other works such as:

- Concrete screed with slabs
- Used with cylindrical piles with slag to support construction excavations

Used for building facades with plastering



**SAWAED ARAB COMPANY**

FOR CONTRACTING Ltd

## SOIL STABILIZATION

### Shotcreting For Swimming Pools

Sawaed Arab Ltd offer unrivalled expertise and an unrivalled level of craftsmanship in the construction of reinforced concrete swimming pool shells.

Our skilled team has over 13 years experience in sprayed concrete and pool shells.

We pride ourselves on our professional service and offer our services to swimming pool contractors and main contractors throughout Saudi Arabia.





**SAWAED ARAB COMPANY**  
FOR CONTRACTING Ltd

# SOIL STABILIZATION

## Remotely Shotcrete

It's one of the much safer ways to apply shotcrete in tunnelling stabilization works.

It is also an economical solution.

It is also much easier to use in slope stabilization.





**SAWAED ARAB COMPANY**  
FOR CONTRACTING Ltd

## SOIL STABILIZATION

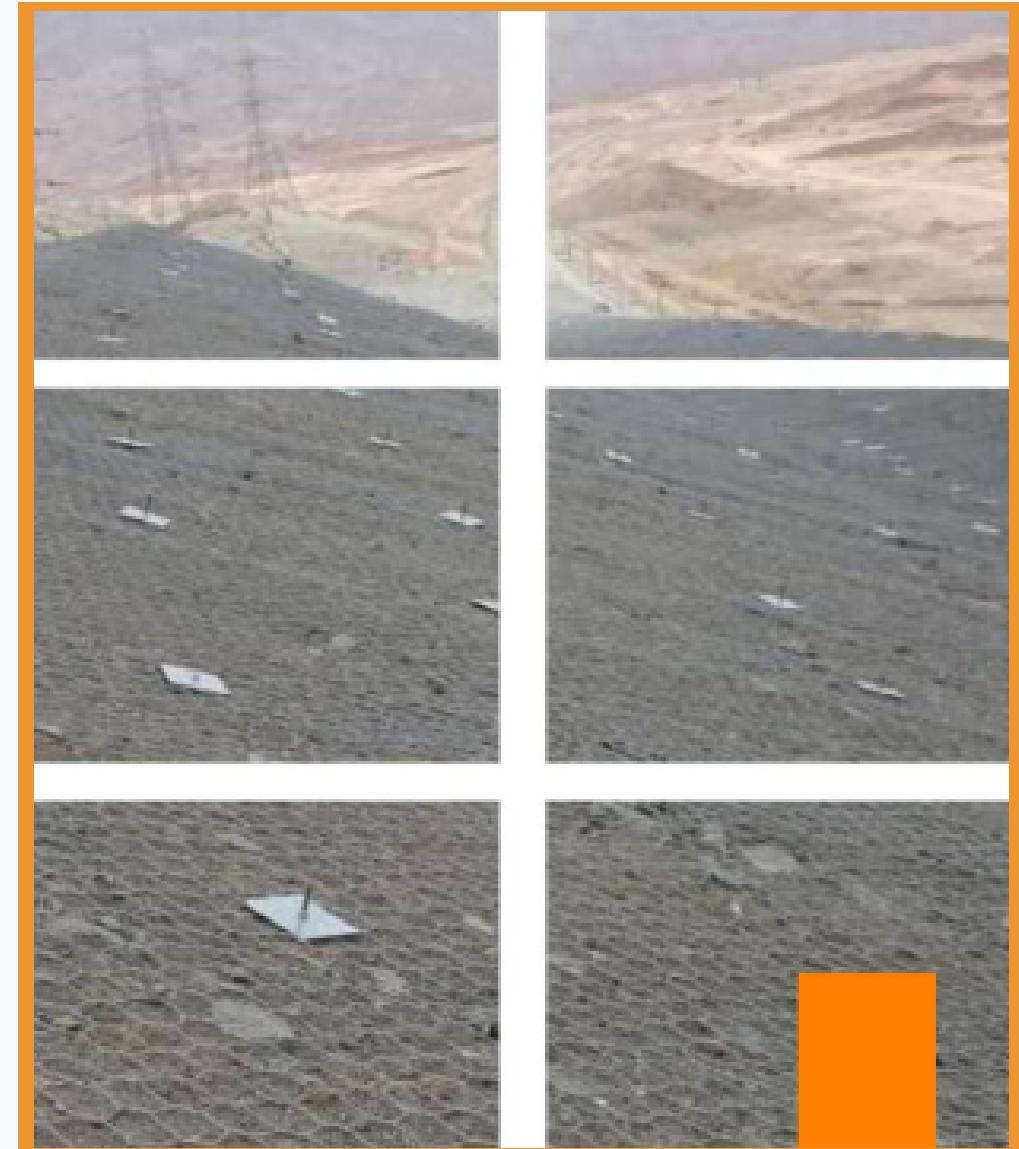
### Stabilizing Rocks By Wire-Netting & Cables

Select this type of stabilization in geological areas with masses of rocks and caves in irregular rock cuttings that contain large cavities and prominent areas, for the purpose of preventing the fall of rocks, which may be disintegrated by erosion factors such as rain, floods, and winds.

Short rock bolts (0.5–1 m) are installed on the front to stabilize the area. A high-strength, high-tension metal wire mesh is placed on the surface.

The wire mesh roll size is 4 × 20 m, using plates and nuts. The isolated mesh lattices on the rock facades are connected by cables between 8–12 mm thick in areas with large sloping masses of rocks.

They are located at high altitudes and elevations and are recommended for highways under high and low mountain slopes due to floods in Saudi Arabia, such as Makkah, Al Taif, and Al Baha.





**SAWAED ARAB COMPANY**  
FOR CONTRACTING Ltd

## STABLIZING ROCKS BY GROUTED BOLTS

This method consists of making holes ranging from 40-64 mm in diameter to a depth of not more than 12 m. The distance between holes is (1.5m-2.5m) or according to the opinion of the relevant (geological engineer), and then rock bolts are planted with lengths and lengths arranged by the competent geologist, the injections are injected after processing with a (shrink-resistant concrete filler (grout) This is done by means of a compact mechanical injection system, using special machines that have the ability to mix and pump the material in the hole, so that the rock bolts are one unit with the rock and to ensure the quality of the work a stress test is performed for a selected group of rock bolts, rather the geological engineer concerned to ensure their stability and cohesion With the rock face, the tensile force in each bolts must be at least 220 KN





**SAWAED ARAB COMPANY**  
FOR CONTRACTING Ltd

## SOIL STABILIZATION

### Stabilizing Rocks By Gabion

This type of stabilization is used in areas where rockfall occurs, especially on mountain slopes, where galvanized metal mesh baskets with a thickness of 3 mm are placed.

These baskets are filled with rocks of different sizes ranging from 15 cm to 40 cm, and then the spaces between the rocks are filled.

The baskets are placed side by side and connected with wire mesh until they become one block along the slope. Their height varies according to the mountain slope height.

The purpose is to stop falling rocks and allow flood water to pass.





**SAWAED ARAB COMPANY**  
FOR CONTRACTING Ltd

# SOIL STABILIZATION

## Stabilization Of Structural Excavation (Shoring)

This type of stabilization depends on the depth of the construction excavation, which in turn depends on the building loads, and its depth may reach up to 12 m.

The excavated site needs to be strengthened, and the appropriate reinforcement type is determined according to the type of soil, whether rocky or earthy.

Construction excavations are supported by one of the following methods:

- Reinforced by concrete retaining walls, sometimes with metal wrenches or deep rock bolts
- Reinforcing by H-beam and wooden hangers
- Reinforcement by sheet metal piles
- Reinforced by cylindrical concrete piles of many types.





**SAWAED ARAB COMPANY**  
FOR CONTRACTING Ltd

## GENERAL CONSTRUCTION

Construction works are considered an economic pillar in the economy of major countries and an effective contributor to progress, growth and prosperity, and we, as a general contracting company, are very interested in developing our technical capabilities to keep pace with every progress or new in this field





**SAWAED ARAB COMPANY**  
FOR CONTRACTING Ltd

## CONCRETE REPAIR

Due to concrete slump, availability of moist and leak of water and acids, concrete and reinforcement is influenced. Thus, we might find cracks and steel rust and in some case if not repaired, reinforcement are subject to complete corrosion, which cause sudden collapse of the structural elements without notice.

### Technical Specifications For Concrete Repair

- Removal of old concrete.
- Sand blasting to remove any corrosive material.
- Concrete painting.
- Repair with for small thickness.
- Repair with formwork for big thickness.





**SAWAED ARAB COMPANY**  
FOR CONTRACTING Ltd

## EPOXY SOLUTION

Here we repair the leakage the basement and water tanks with special ways of repairing like epoxy injection and water-proofing with epoxy coating & cementitious materials as required.

## Air Condition Duct & Electrical works

The company has contributed and is still participating in many electrical extension projects, installation of high and low voltage power stations and panels, as well as large central air conditioning installations and we are always working to develop our skills in this field with full compliance with the security and safety rules followed in all working conditions

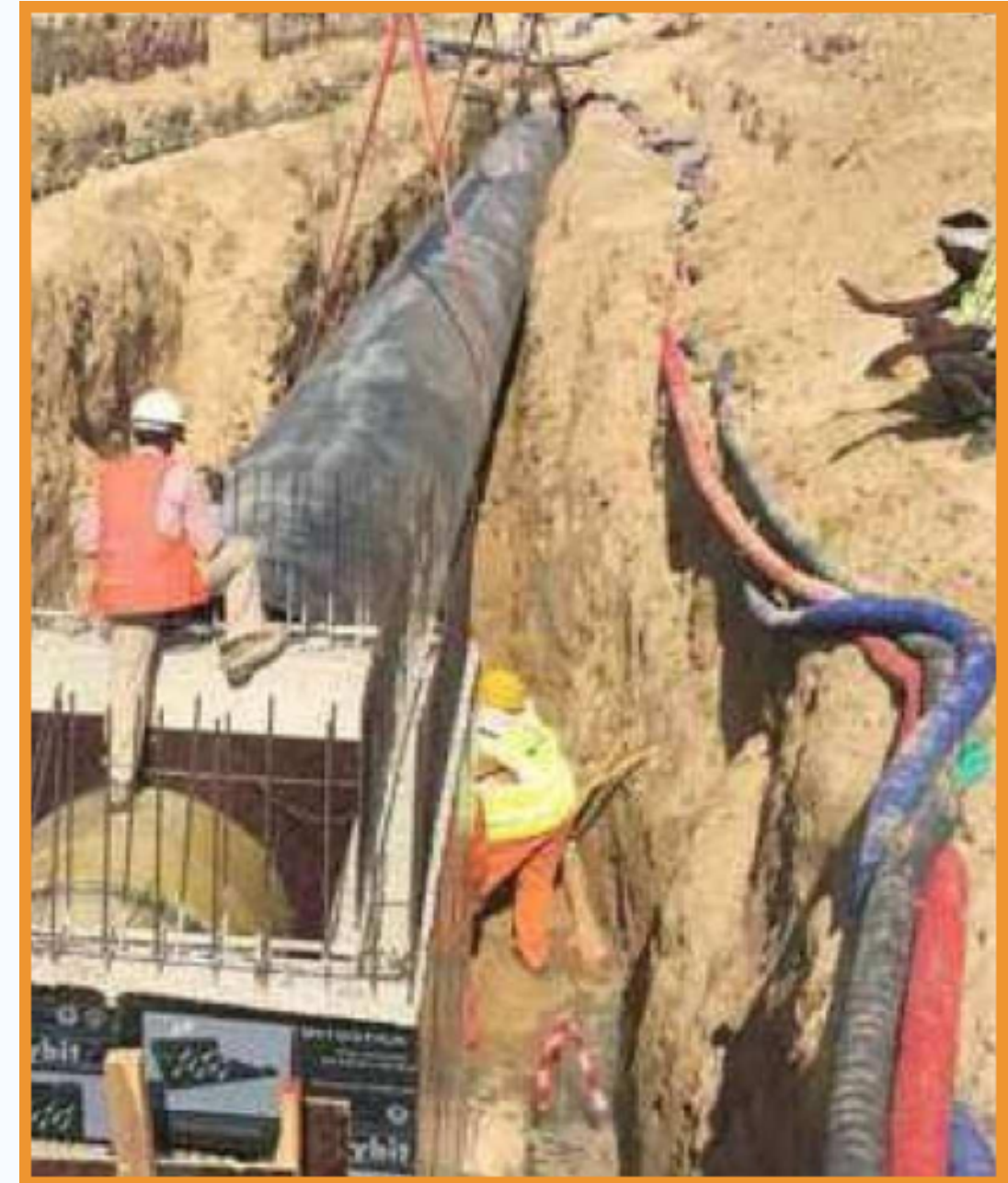




**SAWAED ARAB COMPANY**  
FOR CONTRACTING Ltd

## INFRA STRUCTURE

The company has contributed and is still participating in many infrastructure projects because of its importance and also because it is an important and complementary work for road works and because of the state's great interest in infrastructure throughout the Kingdom





**SAWAED ARAB COMPANY**  
FOR CONTRACTING Ltd

## OUR POLICY

- The company will provide a reasonable effort to comply with its obligation to:
- Protect its employees and others from risk to health and safety
- To promote and maintain the mental, physical and social well-being of the employees
- Established management structure to implement policies to manage and control risk
- Minimized the effect of the consequences of failures
- To provide welfare facilities for employees
- To achieve continual improvement in Health and Safety performance
- And to protect the environment





**SAWAED ARAB COMPANY**  
FOR CONTRACTING Ltd

## EFFECTIVE SAFETY MANAGEMENT

- Incident risk assessment
- Employee Qualifications & Training
- Incident Tracking
- Action item tracking
- Safety meeting management
- Work-site inspection

Ensuring the Health and Safety of our people, assets, environment and reputation is a core value of SAC. We uphold this value in the same way that we ensure the quality of our work by implementing rigorous controls through every phase of our projects.

Training and focus are the keys to prevent accident and incidents. Our employees receive training how to perform their jobs safely, properly, and in compliance with environmental regulations.

Our project control systems provide us with standard processes for project execution to achieve the highest standards of quality, health, safety and environment.

SAC strives to achieve excellence in all aspect of its work, including its commitment to protect the environment. We comply with the environmental standards locally and seek ways to continually improve our energy efficiency, pollution, waste disposal and water usage reduction.



**SAWAED ARAB COMPANY**  
FOR CONTRACTING Ltd

## OUR COMMITMENT

- It is our intention here at Innovative Contractors for Advanced Dimensions to initiate and maintain complete accident prevention and safety training programs.
- Each individual from top management to the working person is responsible for the safety and those persons in their charge and co-workers around them by accepting mutual responsibility to operate safely; we will all contribute to the well-being of personnel.
- Our Guidelines
- In order to achieve our Health, Safety and Environment Commitment and Objectives, SAC sets the following guidelines:
  - To comply with applicable Health and Safety Legislation.
  - To implement Health and Safety management system which comply with the internationally recognized industry standards.
  - To measure our performance and communicate our progress regularly and openly.
  - To combine our engineering and technical know-how with assessment principles in order to reduce risk in as much as reasonably practicable.
  - To ensure all relevant personnel receive appropriate training and advice to allow them to undertake their work safely.
  - To work with our clients, and subcontractors to build a common Health and Safety management system.
  - To facilitate and ensure the suitability of individuals according to their physical capabilities and mental abilities which they can perform within an acceptable degree of efficiency without endangering their own health and safety.
  - To continually strive to improve our Health and Safety performance.



**SAWAED ARAB COMPANY**  
FOR CONTRACTING Ltd

# HARAMAIN HIGH SPEED RAIL PROJECT

**Client:** Saudi Arabia Railways, SAR

**Consultant:** Dar Alhanda sa

**Main Contractor:** Al Arrab Contracting Co.

**Location:** Makka&Jeddah

## Scope Of Work:

- Rock cutting ( drill & blast , chemical expansive material)
- Rock scaling
- Wire netting
- Rock bolts stabilization
- Shotcrete + wire mesh
- Gabion box retaining
- Riprap slope protection
- Manholes
- General constructions





**SAWAED ARAB COMPANY**  
FOR CONTRACTING Ltd

# SAUDI STRATEGIC STORAGE PROGRAM SSSP – KSA

**Client:** Aramco

**Consultant:** Maintenance  
Department, Aramco

**Main Contractor:** Sawaed  
Arab Co. Ltd.

**Location:** Eastern Province

**Scope Of Work:**

- Rock scaling
- Rock bolts stabilization
- Fiber reinforced Shotcrete





**SAWAED ARAB COMPANY**  
FOR CONTRACTING Ltd

## THAKHER CITY, PHASE 1, – KSA

**Client:** Thakher Development Co. Ltd.

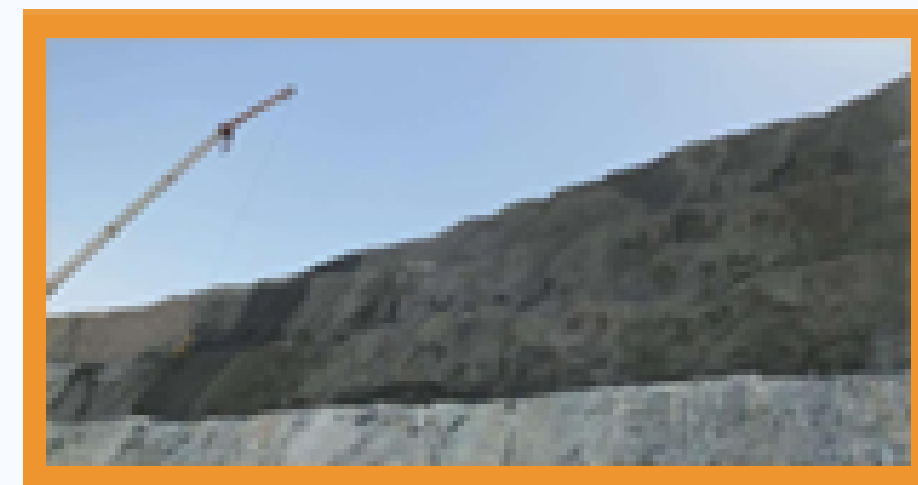
**Consultant:** Khatib & Alami

**Main Contractor:** Sawaed Arab Co. Ltd.

**Location:** Thakher Makka

### Scope Of Work:

- Rock cutting ( drill & blast , chemical expansive material)
- Rock scaling
- Wire netting
- Rock bolts stabilization
- Shotcrete + wire mesh
- General Constructions
- Infra structural





**SAWAED ARAB COMPANY**  
FOR CONTRACTING Ltd

# ROCK STABILIZATION AT SOUTHERN AREA MILITARY BASES

**Client:** Ministry of Defence

**Consultant:** Maintenance Department, MOD

**Main Contractor:** Sawaed Arab Co. Ltd.

## Scope Of Work:

- Rock cutting (chemical expansive material , Splitter)
- Rock scaling
- Shotcrete + wire mesh



**SAWAED ARAB COMPANY**  
FOR CONTRACTING Ltd

# ABHA AREA HIGHWAYS MAINTENANCE

**Client:** Ministry of Transportation

**Consultant:** General Administration of  
Maintenance, MOT

**Main Contractor:** Shibh Al Jazeera  
Contracting Co., SAJCO

**Location:** ABHA Ministry of  
Transportation

**Scope Of Work:**

Rock scaling

Wire netting

Rock bolts stabilization

Shotcrete + wire mesh





**SAWAED ARAB COMPANY**  
FOR CONTRACTING Ltd

## ABHA DESALINATION PIPELINE

**Client:** Saline Water Conversion Corporation, SWCC

**Consultant:** PÖYRY Switzerland Ltd.

**Main Contractor:** Al Rashed Contracting Co., ARCC

### Scope Of Work:

Rock cutting ( Splitter )

Rock scaling

Rock bolts stabilization

Shotcrete + wire mesh





**SAWAED ARAB COMPANY**  
FOR CONTRACTING Ltd

## NORTH SOUTH RAILWAY

**Client:** Saudi Arabia Railways, SAR ( Al-Suwaiket Co.)

**Consultant:** Dar Alhandasa

**Main Contractor:** Al Rashed Contracting Co., ARCC

### Scope Of Work:

Rock scaling

Wire netting

Rock bolts stabilization

Shotcrete + wire mesh

Gabion box retaining

Riprap slope protection





**SAWAED ARAB COMPANY**  
FOR CONTRACTING Ltd

# THE AL MASHAAER AL MUGADDASSAH METRO LINE

**Client:** Makkah Region Development  
Authority, MDRA

**Consultant:** Dar Alhandasa

**Main Contractor:** China Railway  
Construction Corporation, CRCC

## Scope Of Work:

Rock scaling

Wire netting

Shotcrete + wire mesh





**SAWAED ARAB COMPANY**  
FOR CONTRACTING Ltd

## ASHAR TENTED RESORT

**Client:** Royal Commission for Al-Ula, RCU

**Consultant:** AECOM

**Main Contractor:** Nesma & Partners

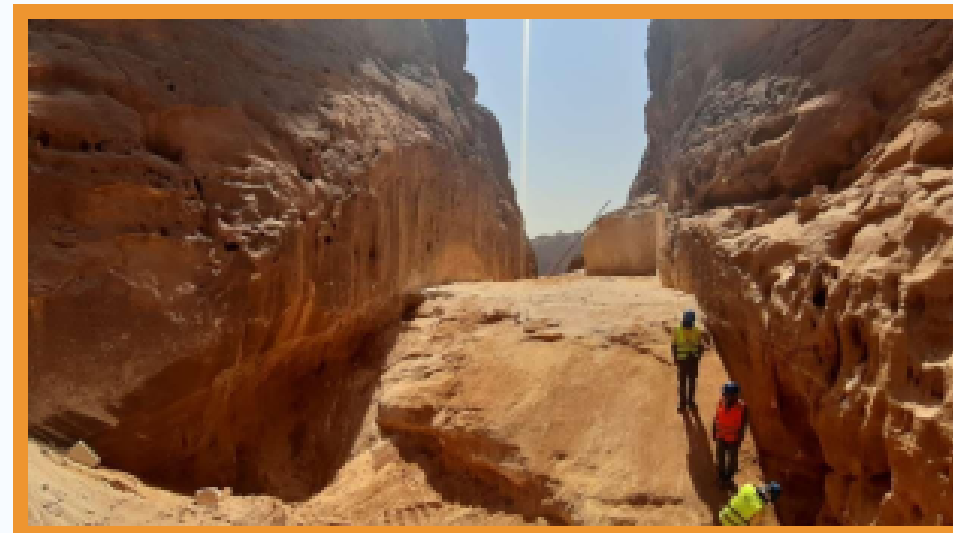
**Location:** Al-Ula region

### Scope Of Work:

Rock cutting ( Wire Saw , Splitter ,  
chemical expansive material )

Rock scaling

Rock bolts stabilization  
( Hidden Bolts )





**SAWAED ARAB COMPANY**  
FOR CONTRACTING Ltd

## TAIF ROADS MAINTENANCE

**Client:** Ministry Of Municipal and Rural Affairs, MOMRA

**Consultant:** AL-AMR GROUP  
COMPANY FOR  
ENGINEERINGCONSULTANCY RED  
SEA CONSULTANTS

**Main Contractor:** Ijzala  
Contracting Co. Ltd. Al Jazera Co.

**Location:** Taif

**Scope Of Work:**

Rock scaling

Wire netting

Rock bolts stabilization

Shotcrete + wire mesh

Gabion box retaining





**SAWAED ARAB COMPANY**  
FOR CONTRACTING Ltd

# AL IMAM MUSLIM WITH PRINCE NAIIF INTERSECTION

**Client:** Madinah Development  
**Authority**

**Consultant:** Euro Consult

**Main Contractor:** Sawaed Arab Co.  
Ltd.

## **Scope Of Work:**

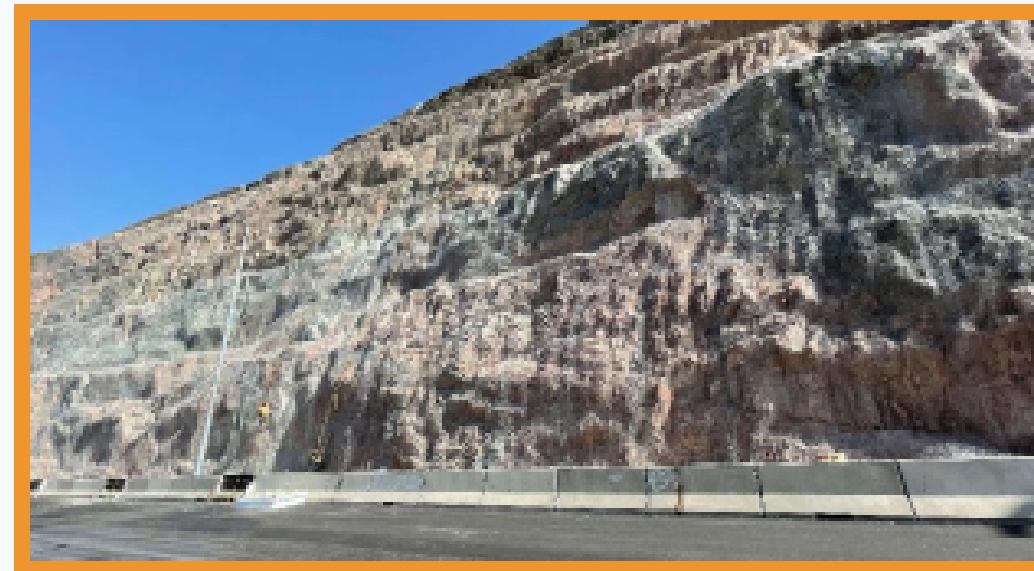
Rock scaling

Wire netting

Rock bolts stabilization

Shotcrete + wire mesh

Gabion box retaining





**SAWAED ARAB COMPANY**  
FOR CONTRACTING Ltd

# NEOM-THE LINE (PORTALS) - SAJCO

**Client:** NEOM

**Consultant:** AECOM

**Main Contractor:** SAJCO

## Scope Of Work:

Fiber Reinforced Shotcrete.

Rock bolts stabilization

Self Drilling Rock Bolt.





**SAWAED ARAB COMPANY**  
FOR CONTRACTING Ltd

# MAKKA-ALHADA ROAD MAINTENANCE

**Client:** Ministry of Transport

**Consultant:** Applus

**Main Contractor:** Motlaq

Al-Ghewairi Company

**Location:** Makka

**Scope Of Work:**

Rock Cutting

Wire Netting

Rock Bolt

Shotcrete + Wire mesh





**SAWAED ARAB COMPANY**  
FOR CONTRACTING Ltd

# PROVIDING WATER TO THE 3RD INDUSTRIAL CITY

**Client:** MODN

**Consultant:** JASARAH

**Main Contractor:** Sawaed Arab Company L.t.d

**Location:** Al-Hair city

**Scope Of Work:**

Pipe Lines that connected to the main Line of WNC





**SAWAED ARAB COMPANY**  
FOR CONTRACTING Ltd

# NETWORK STORM DRAINAGE IN THAKHER CITY

**Client:** Thakher Development Company L.t.d

**Consultant:** KHATIB & ALAM

**Main Contractor:** Sawaed Arab Company L.t.d

**Location:** Makka

## Scope Of Work:

Connect The Network of Storm Drainage in Thakher City to The Network of Storm Drainage of The main Road of Al-Haram Al-Makki





**SAWAED ARAB COMPANY**  
FOR CONTRACTING Ltd

## ROADS MAINTENANCE IN NAJRAN REGION

**Client:** Ministry of Transport and Logistic Services

**Consultant:** KHATIB & ALAM

**Main Contractor:** Al-Mehthel General Contractor Company

**Location:** Najran Region

**Scope Of Work:**

-Rock Cutting-Rock Bolts-Shotcrete





**SAWAED ARAB COMPANY**  
FOR CONTRACTING Ltd

# WATER PIPES CONNECTION TO BALLAHMAR - ABHA

**Client:** NWC

**Consultant:** Al-Amr Consaltation Company

**Main Contractor:**

AlMasar AlHadeeth

**Location:** Abha

**Scope Of Work:**

Rock Cutting

Rock Bolts

Shotcrete





**SAWAED ARAB COMPANY**  
FOR CONTRACTING Ltd

# CONTACT US



+966 12 566 6691



[www.sawaedarab.com](http://www.sawaedarab.com)



[info@sawaedarab.com](mailto:info@sawaedarab.com)



Saudi Arabia, Makkah Al-  
Mukarramah, Al Sharayaa

